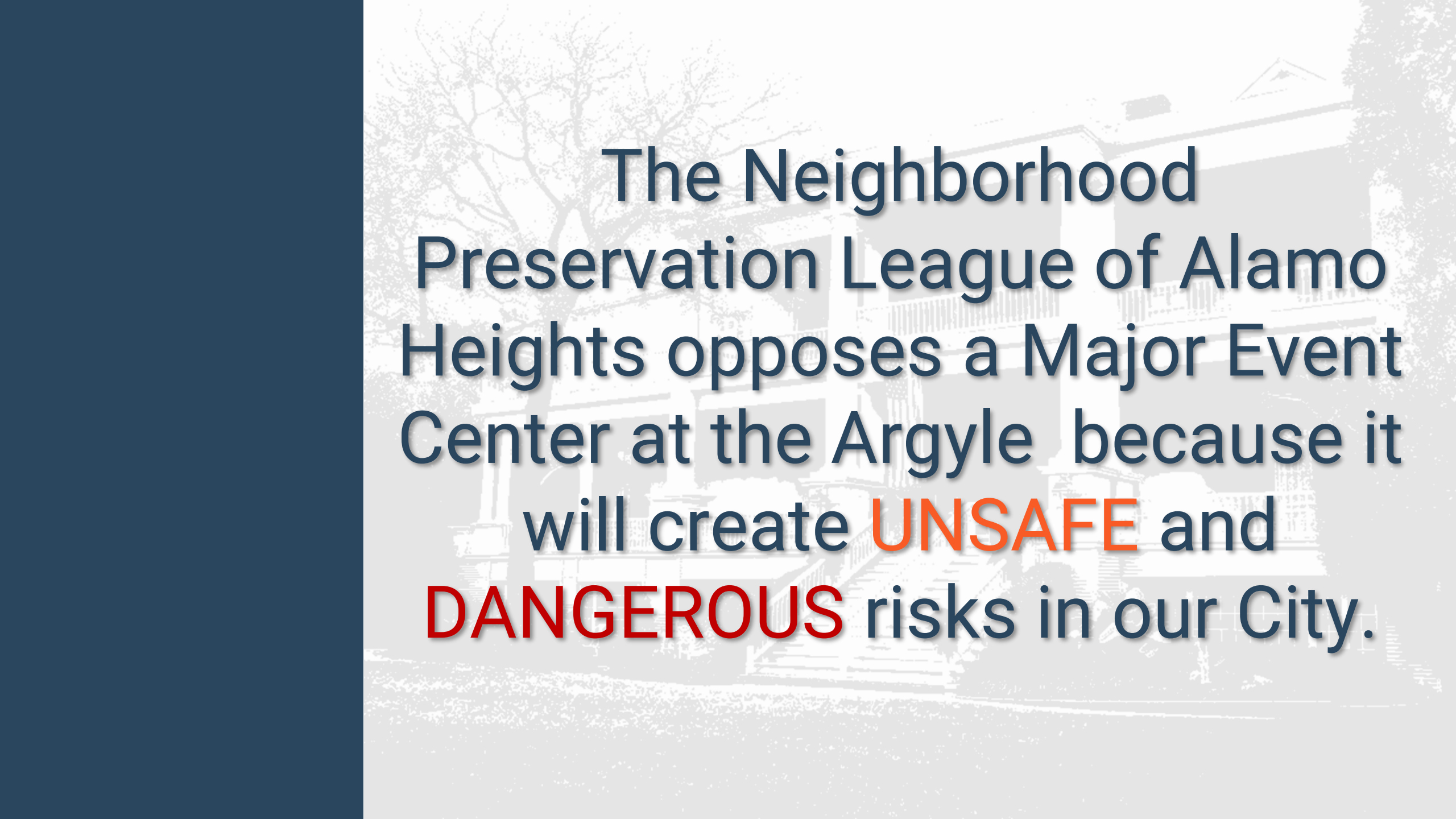


**ARGYLE
EVENT
CENTER**

SAVE OUR NEIGHBORHOOD





The Neighborhood
Preservation League of Alamo
Heights opposes a Major Event
Center at the Argyle because it
will create **UNSAFE** and
DANGEROUS risks in our City.

The Argyle

From
Elegant
Dining
to . . .



The Argyle

... Party
Central



The Argyle

from
Blending
into the
neighborhood. .

.. to a garish
display of
standing out



The Argyle

from
PEACEFUL and
QUIET...

... to a flaunting
of extravagant
parties, each one
grander than
the last one



The Argyle

Alcohol flows freely

A Major Event Center will mean exponentially more events and more drinking, creating more **DANGEROUS** risks



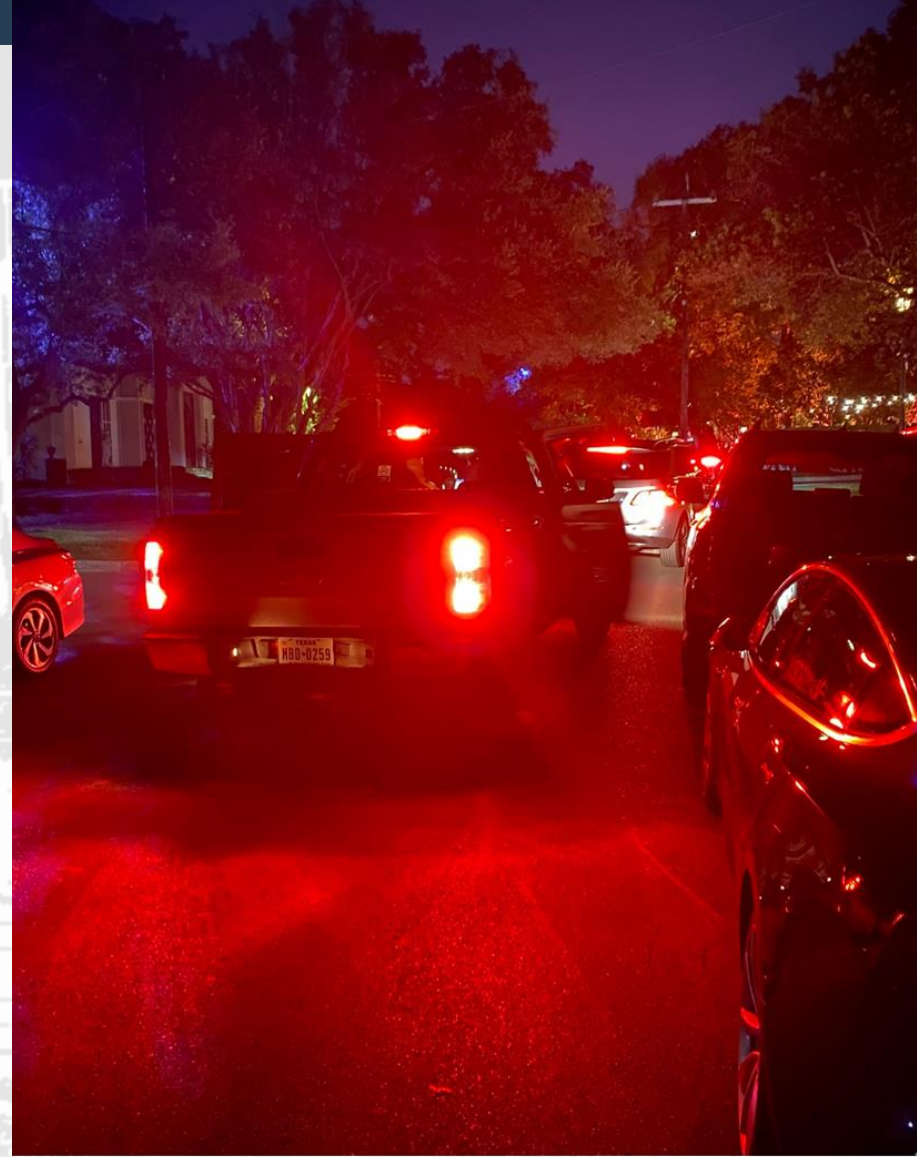
PARTY PROBLEMS WILL BECOME MORE FREQUENT



EMS and Fire Trucks called to an Argyle Event



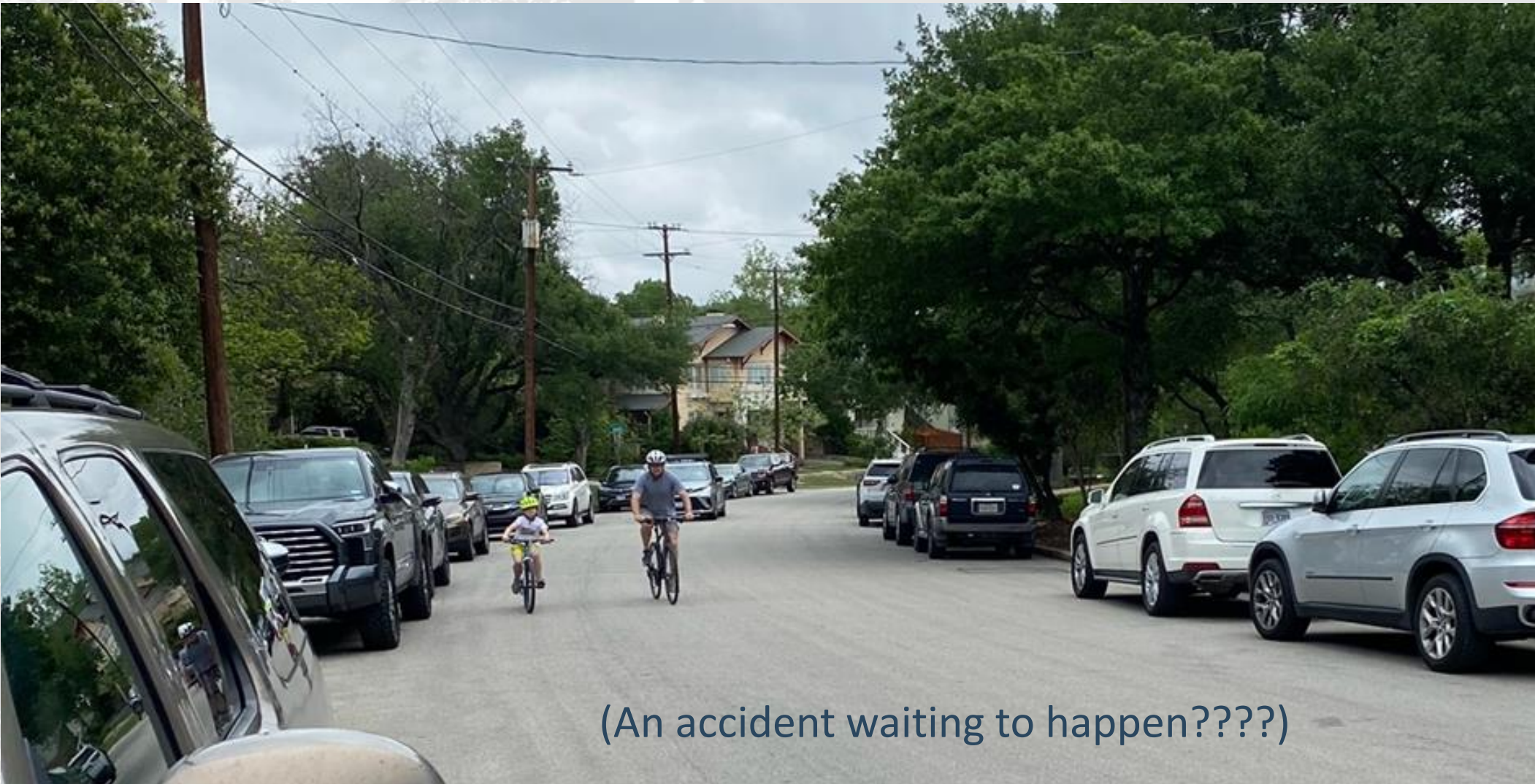
EVENTS CREATE TRAFFIC CONGESTION
WHICH is **DANGEROUS** FOR children, walkers and bicyclists



OUR NEIGHBORHOOD IS FULL OF WALKERS AND BICYCLISTS



EVENTS AT THE ARGYLE MAKE OUR STREETS UNSAFE FOR OUR CITIZENS



(An accident waiting to happen???)

AND UNSAFE FOR VISITORS



(Another accident waiting to happen???)

EVENTS CLOG OUR STREETS



Cars park on our streets and Valet lines block traffic

COMMERCIAL BUSES ON RESIDENTIAL STREETS

The Argyle proposes having a **multitude** of these parties at the Major Event Center



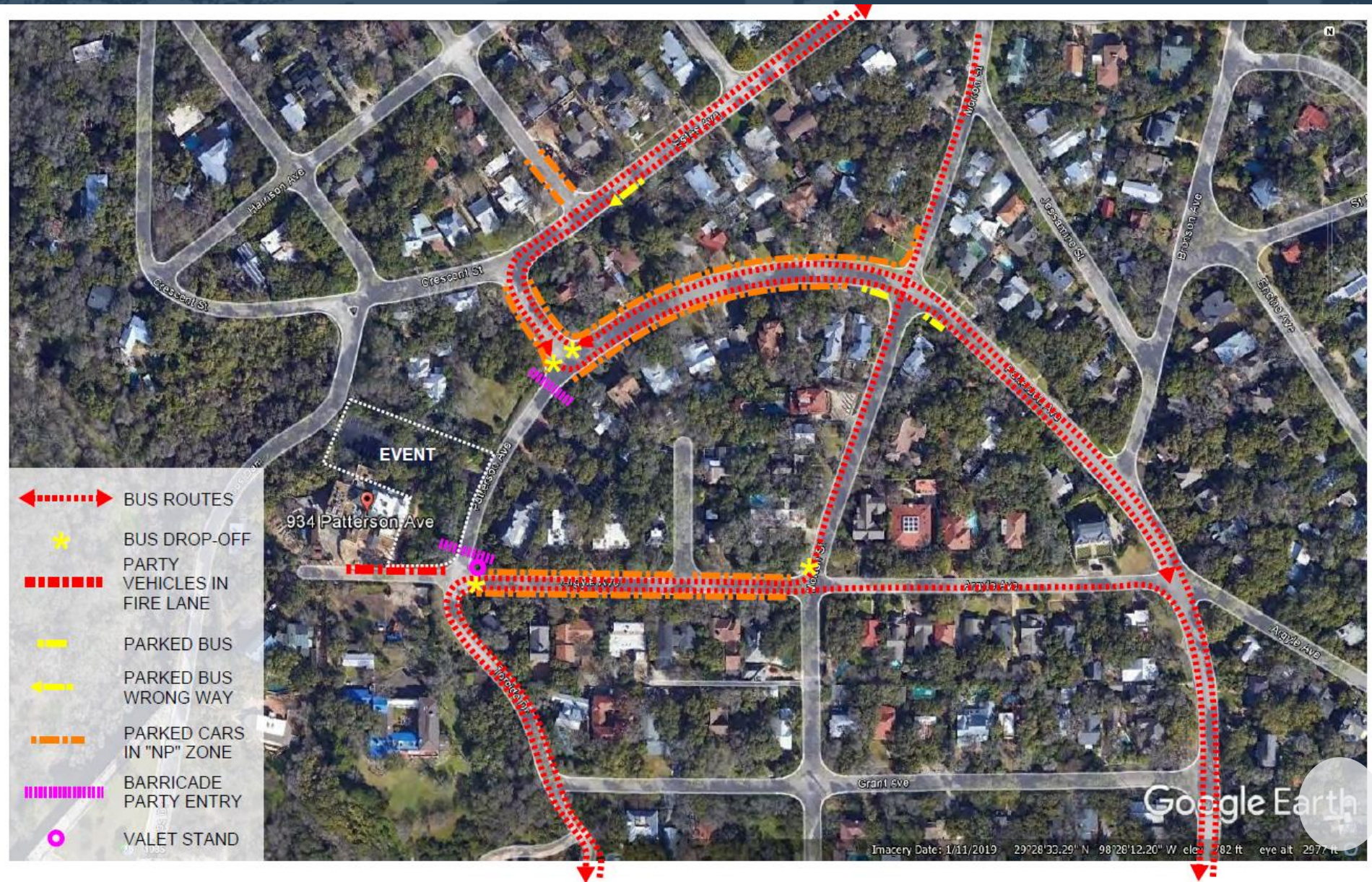
Buses transporting party guests to the Queen's Ball 2022. One every 3 minutes . . .

PARTY TRAFFIC IMPACT ON NEIGHBORHOOD STREETS

Queen's Ball 2022

Bus Count
41 = 1 bus
every 3
minutes

Patterson Ave.
6:30-8:30pm





COMMERCIAL VEHICLES ON RESIDENTIAL STREETS

Garbage trucks begin service as early as 6:30 am.
Purveyors, Vendors and Suppliers, Decorating, etc. arrive all day.

This traffic will exponentially increase
with a MAJOR EVENT CENTER





**TRUCKS &
VALETS
CONTINUALLY
IMPEDE THE
FLOW OF
TRAFFIC**

Creates unsafe traffic conditions



Delivery trucks for set up of events, impeding flow of traffic



Valet parking impeding, the flow of traffic



Impact on
neighborhood:

USE OF
ON-STREET
PARKING
FOR EVENTS



Crescent at Patterson Ave.



Torcido



Argyle St.

SACRIFICING OUR STREETS FOR
A PARTY HOUSE!
CREATING UNSAFE CONDITIONS
FOR OUR CHILDREN



Impact on neighborhood:

USE OF
ON-STREET
PARKING
FOR EVENTS



Argyle Street



Allen Street

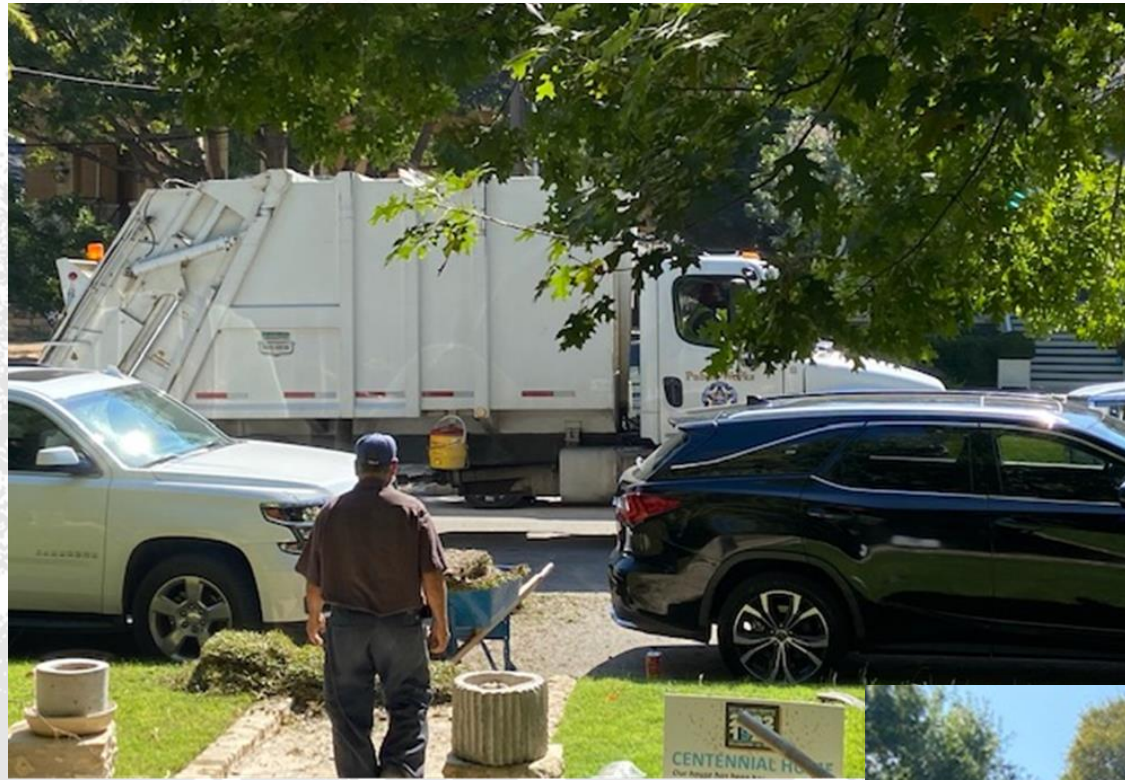


Estes Avenue

SACRFICING OUR STREETS FOR A PARTY HOUSE!
CREATING UNSAFE CONDITIONS FOR OUR CHILDREN



**PARKING AT
LUNCHEON
EVENTS CREATES
UNSAFE
CONDITIONS**



City Garbage Truck doesn't have access to trash cans

Cars had to BACK UP on Patterson to allow City Garbage Truck access between Argyle guest parking





**PARKING AT
LUNCHEON
EVENTS CREATES
DAYTIME
CHAOS**



A Landscape Contractor is unable to safely make a delivery and is forced to park in street

Citizens are forced to reschedule their lives to accommodate Argyle Parties, Or create unsafe conditions like this





GREEN CONES UP EVERYDAY, NOT JUST FOR EVENTS



City street “claimed”
by Argyle everyday,
even non-event days



During events no one can park
in front of Argyle only in front
of neighborhood residences





OTHER PARKING PROBLEMS



Illegal use of residential property for commercial parking



Argyle guests ignoring posted "No Parking Signs"



PARKING LOT ELIMINATED FOR EVENTS



Parking Lot on a normal day



During events no one can park in the parking lot



A Major Event Center will permanently replace existing parking

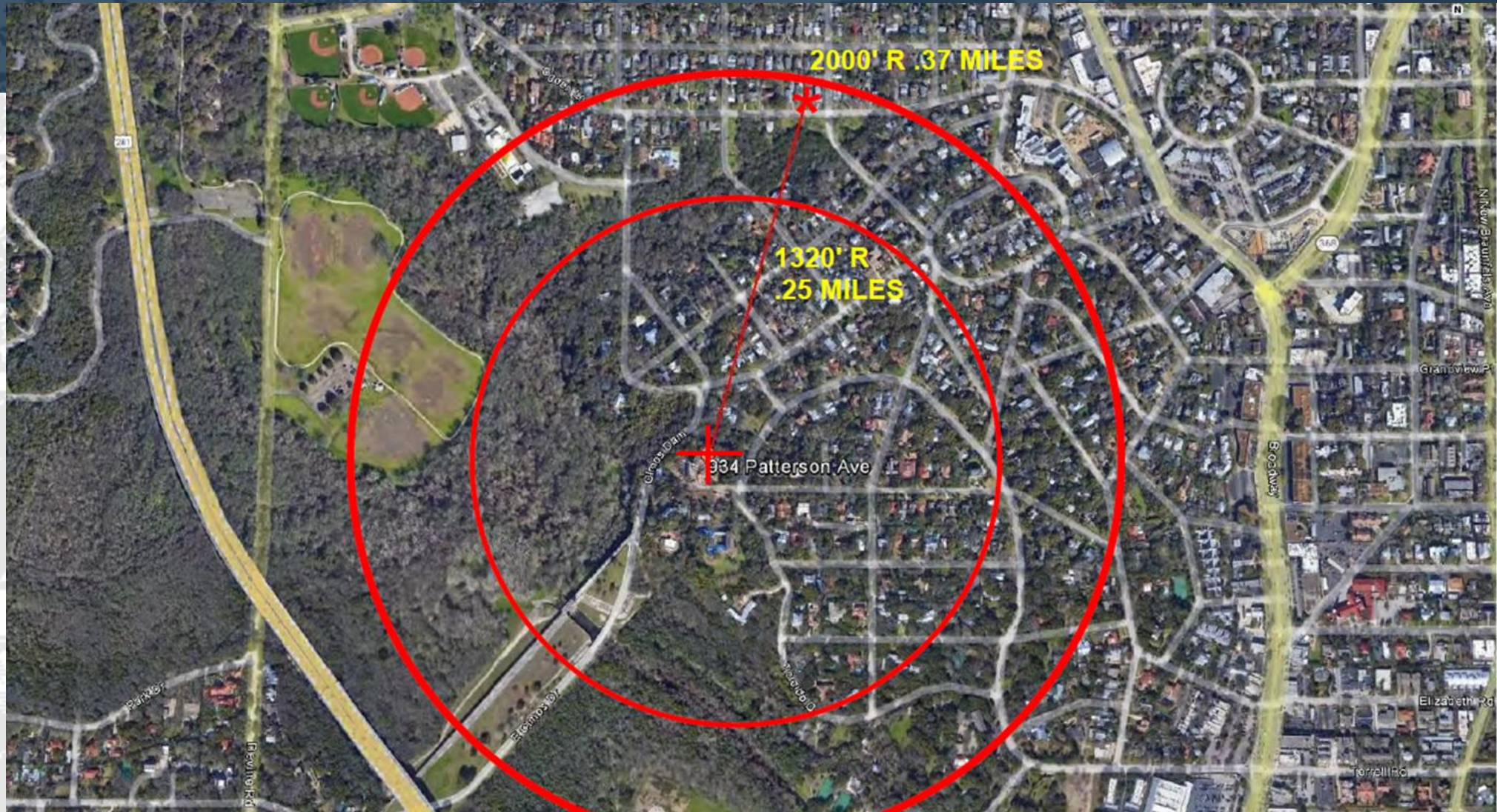


The Big Tent does not go up and down . . . but preparation for events takes days. This eliminates ALL parking



Parking Lot on a normal day with tent loses 22 spaces.

NOISE IMPACT ON THE NEIGHBORHOOD



Neighbors on Ogden can hear music from the Argyle (a third of a mile away)

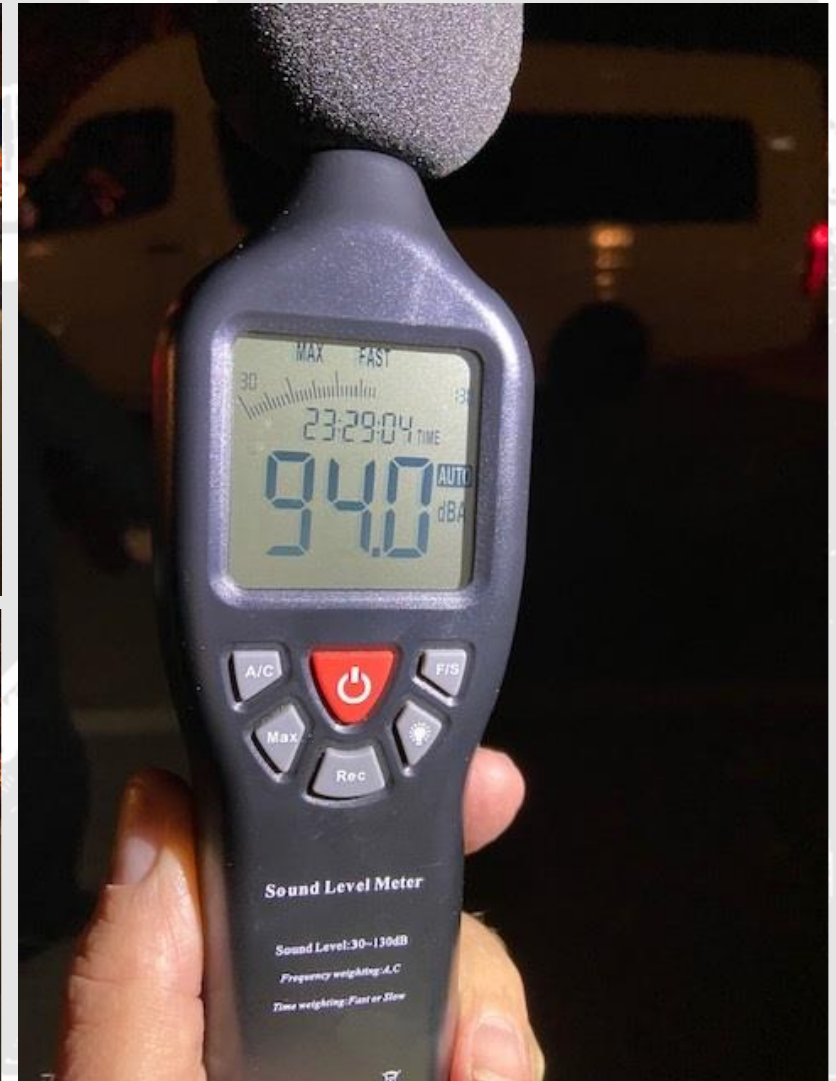
NOISE IMPACT ON THE NEIGHBORHOOD

Loud Noise at these readings are dangerous as well as a nuisance

75 db = vacuum cleaner

85 db = diesel truck:
4 times louder than 70db

90 db = 8 times louder
than 70db harmful to ears



NOISE IMPACT ON THE NEIGHBORHOOD



Isn't it true that all the noise will move inside if they build the **MAJOR EVENT CENTER**?

NO! Even with a new building, the Argyle still plans on having events on the lawn and under tents with amplification. The proposed design of the major event center has two walls of glass doors that open directly onto terraces facing the neighborhood. **AND** there is no penalty if they do have **OUTSIDE MUSIC**, only a \$500 fine for a noise violation.



PUBLIC REASONS FOR EXPANSION

WHY THE EXPANSION IS NECESSARY .. ?

According to
The Argyle

1. Existential Financial Crisis (Or is this just poor management?)
2. Deferred Maintenance of the historic building (Or was this just poor planning?)



How did some of the wealthiest people in Texas get themselves into an Existential Financial crisis?

Here's the Answer . . .

From the February 16, 2022 Letter to Argyle Members

“Another purpose for The Hall is a very serious financial concern which simply is existential to The Argyle....”

*The Argyle relies heavily on members' private events for its financial viability. Without them, there would have to be some combination of a variety of **undesirable options**, including member assessments, significant dues increases, minimum spending requirements, significant increased food and beverage prices, or even vastly increasing the size of our membership.”*

So their DUES WON'T INCREASE!

The self-created SO-CALLED “Existential Financial Crisis” of The Argyle should not be solved on the backs of the neighborhood

HELP US stop the Major Event Center!!

WE SHOULDN'T SACRIFICE OUR NEIGHBORHOOD FOR A PARTY HOUSE

- 1. SHARE OUR WEBSITE** with your friends & neighbors.
- 2. MAKE A DONATION** to NPLAH a 501(c)(3) in one of two ways:
 - By writing a check to: NPLAH 732 Patterson Ave. Alamo Heights, TX 78209- 5637
 - Donate online specifically to our cause at Preservation Texas: www.preservationtexas.org/nplah
- 3. PUT A SIGN UP IN YOUR YARD.** Contact us at info@nplah.org and we will deliver one.
- 4. LET CITY COUNCIL HEAR FROM YOU** by calling (210) 822-3331 and leaving a message for the Mayor, Council Members or the City Manager.....and feel free to write a letter or email.



**ARGYLE
EVENT
CENTER**

SAVE OUR NEIGHBORHOOD